

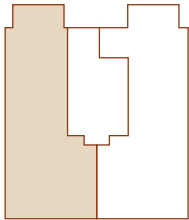
Klay

Wandsworth
London
SW18 1EP

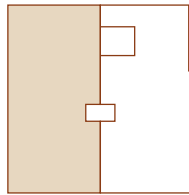
Fourth and Fifth Floor Apartment Eight



Fourth Floor



Fifth Floor



Kitchen

2.9m x 2.8m / 9.5ft x 9.2ft

Upper Front Terrace

2.4m x 1.3m / 7.9ft x 4.3ft

Principal Bedroom

3.0m x 4.5m / 9.8ft x 14.8ft

Third Bedroom

2.8m x 3.2m / 9.2ft x 10.5ft

Living / Dining

4.7m x 6.1m / 15.4ft x 20.0ft

Upper Back Terrace

5.6m x 4.4m / 18.4ft x 14.4ft

Second Bedroom

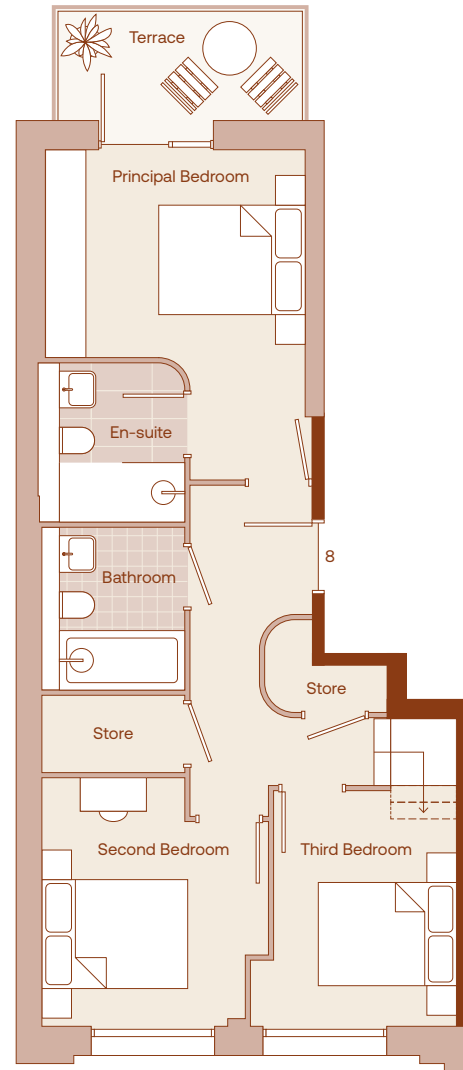
3.1m x 3.4m / 10.2ft x 11.2ft

Lower Terrace

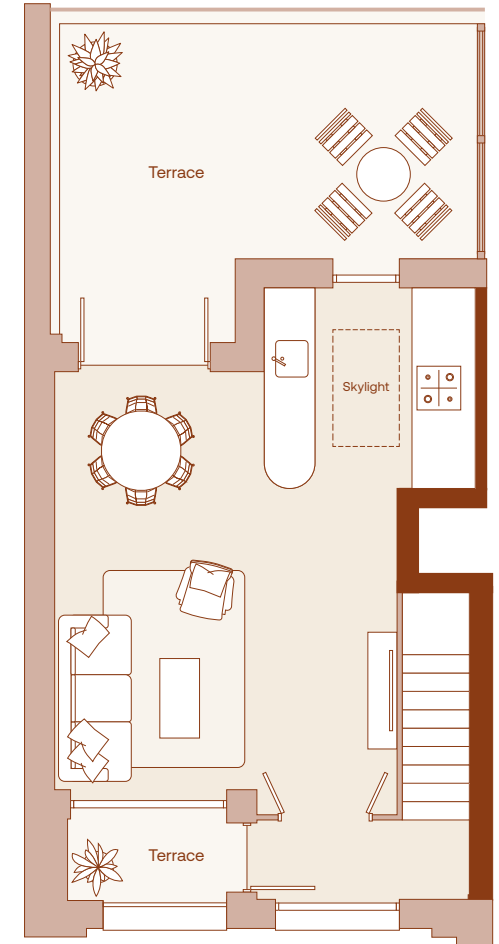
3.4m x 1.5m / 11.2ft x 4.9ft

Total

96 sqm / 1,033 sqft



Lower Level



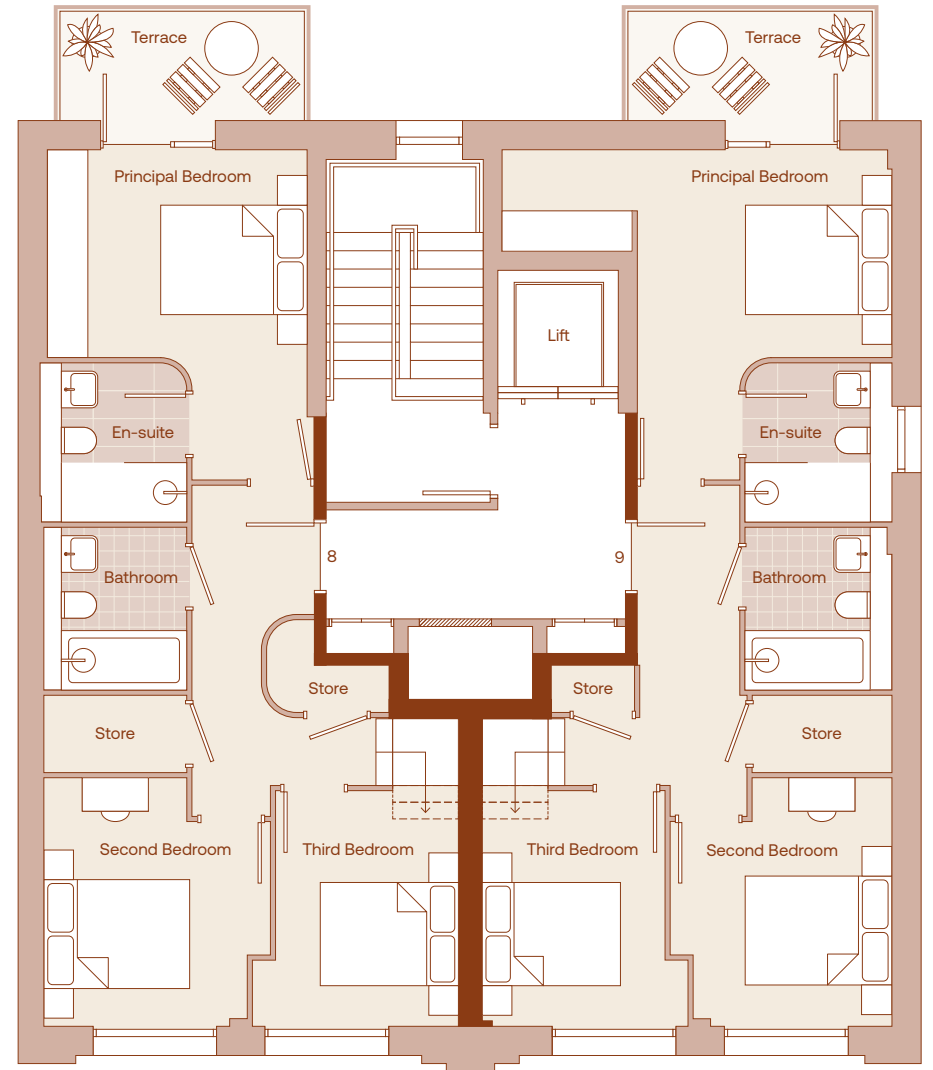
Upper Level



Klay

Wandsworth
London
SW18 1EP

Fourth Floor Overview



art
form

Klay

Wandsworth
London
SW18 1EP

Fifth Floor Overview

