



# TILEMAKERS YARD / SW18

**A STUNNING ONE BEDROOM APARTMENT WITH ACCESS TO A COMMUNAL GARDEN, CONVENIENTLY LOCATED NEAR WANDSWORTH COMMON AND THE AMENITIES OF BELLEVUE ROAD.**

The open plan reception room / kitchen is flooded with natural light. There is great space for dining which gives the property an ideal homely feel.

The property also boasts a favourable double bedroom and beautiful modern bathroom with a shower over bath.

This lovely property is positioned on Isis Street, just off Garratt Lane, moments away from Garratt Green and a short walk from the open spaces of Wandsworth Common. The amenities of Garratt Lane and Bellevue Road are both within easy walking distance as are the transport facilities of Earlsfield Overground station.

EPC Rating: B | Deposit: £2,190

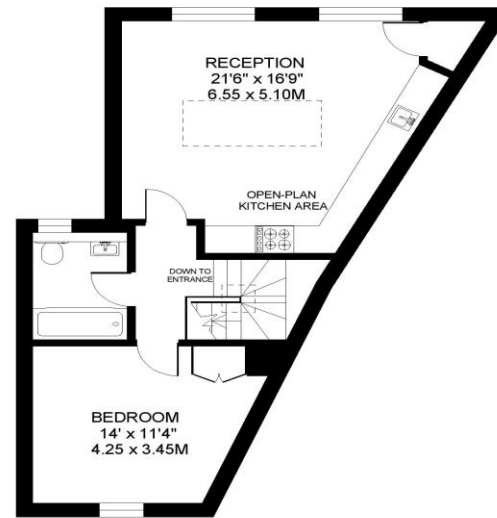


**OPEN PLAN RECEPTION / KITCHEN |  
SPACIOUS DOUBLE BEDROOM |  
MODERN KITCHEN | COMMUNAL  
GARDEN | UNFURNISHED**



TILEMAKERS YARD  
EARLSFIELD  
LONDON SW18

APPROXIMATE INTERNAL FLOOR (LIVING) AREA  
543 SQ.FT. / 50.4 SQ.M.



FIRST FLOOR

**COPYRIGHT:**  
FLOORPLAN PRODUCED FOR "PALACE GATE" by www.floorplanners.co.uk  
This plan is proportionally correct, but not to a given scale, and is for guidance only, and must not be relied upon as a statement of fact.  
All measurements and areas are approximate only, and have been prepared in accordance with the current edition of the RICS Code of Measuring Practice.  
Where a room has a sloping ceiling, the dotted line marks 1.5m height, and the measurements are shown at floor level.

**IMPORTANT:** We would like to inform prospective purchasers that these sales particulars have been prepared as a general guide only. A detailed survey has not been carried out, nor the services, appliances and fittings tested. Room sizes should not be relied upon for furnishing purposes and are approximate. If floor plans are included, they are for guidance purposes only and may not be to scale. If there are any important matters likely to affect your decision to buy, please contact us before viewing the property.



ALL STATEMENTS CONTAINED IN THESE PARTICULARS AS TO THIS PROPERTY ARE MADE WITHOUT RESPONSIBILITY ON THE PART OF RAMPTON BASELEY ESTATE AGENTS

**RAMPTON BASELEY OFFICES**

NORTHCOTE ROAD SW11 | 020 7228 5111  
BELLEVUE ROAD SW17 | 020 3846 0999  
BALHAM HIGH ROAD SW17 | 020 8767 7079

[www.ramptonbaseley.com](http://www.ramptonbaseley.com)

