





# LAMBROOK TERRACE / SW6

**GOOD SIZED TWO BEDROOM FIRST FLOOR FLAT ON LAMBROOK TERRACE, IN A GREAT LOCATION NEAR BISHOPS PARK.**

The property benefits from an open plan modern kitchen fitted with full appliances and ample storage room, two double bedrooms, one bathroom with a shower.

Lambrook Terrace is a lovely quiet residential street in Fulham, ideally located a short walk to Parsons Green, Bishops Park and the River whilst conveniently being surrounded by many amenities.

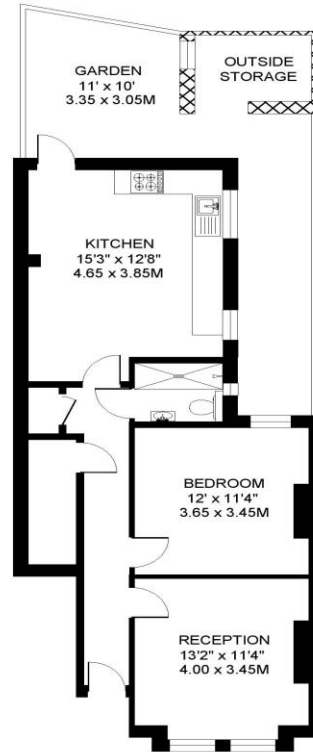
EPC: C | Tax Band: D



**TWO DOUBLE BEDROOMS |  
RECEPTION ROOM | FLAT |  
TERRACED | GARDEN |  
UNFURNISHED**



LAMBROOK TERRACE  
LONDON SW6  
APPROXIMATE INTERNAL FLOOR (LIVING) AREA  
■ = 657 SQ.FT / 61 SQ.M.  
APPROXIMATE ADDITIONAL AREAS  
XXX = 41 SQ.FT / 3.8 SQ.M.  
TOTAL AREAS SHOWN ON PLAN  
698 SQ.FT / 64.8 Q.M.



GROUND FLOOR

COPYRIGHT:  
THIS DOCUMENT PRODUCED FOR "RAMPTON BASELEY" BY www.Ramptonbaseley.co.uk  
All measurements and prices are approximate only, and have been prepared in accordance with the current edition of the RICS Code of Measuring Practice.  
Where a room has a sloping ceiling, the ceiling has been 1.5m high, and the measurements are shown at that level.

**IMPORTANT:** We would like to inform prospective purchasers that these sales particulars have been prepared as a general guide only. A detailed survey has not been carried out, nor the services, appliances and fittings tested. Room sizes should not be relied upon for furnishing purposes and are approximate. If floor plans are included, they are for guidance purposes only and may not be to scale. If there are any important matters likely to affect your decision to buy, please contact us before viewing the property.



ALL STATEMENTS CONTAINED IN THESE PARTICULARS AS TO THIS PROPERTY ARE MADE WITHOUT RESPONSIBILITY ON THE PART OF RAMPTON BASELEY ESTATE AGENTS

## RAMPTON BASELEY OFFICES

NORTHCOTE ROAD SW11 | 020 7228 5111  
BELLEVUE ROAD SW17 | 020 3846 0999  
BALHAM HIGH ROAD SW17 | 020 8767 7079

[www.ramptonbaseley.com](http://www.ramptonbaseley.com)

