



 RAMPTON  
BASELEY

STORMONT ROAD/ SW11

# STORMONT ROAD / SW11

**A LIGHT AND SPACIOUS FAMILY HOME NEUTRALLY DECORATED AND PRESENTED IN EXCELLENT CONDITION THROUGHOUT.**

The property extends to over 2,000 sq. ft. and comprises an elegant double reception room with wood floors, fully extended kitchen/breakfast room with ample space for dining and doors opening onto a paved garden. Upstairs the property comprises master bedroom with en suite shower room, four further double bedrooms all with fitted cupboards, family bathroom and further shower room.

Stormont Road is ideally located just off the green open spaces of Clapham Common, close to the amenities of Lavender Hill and Northcote Road and is within easy walking distance to both Clapham Junction (B.R) station and Clapham Common Underground.



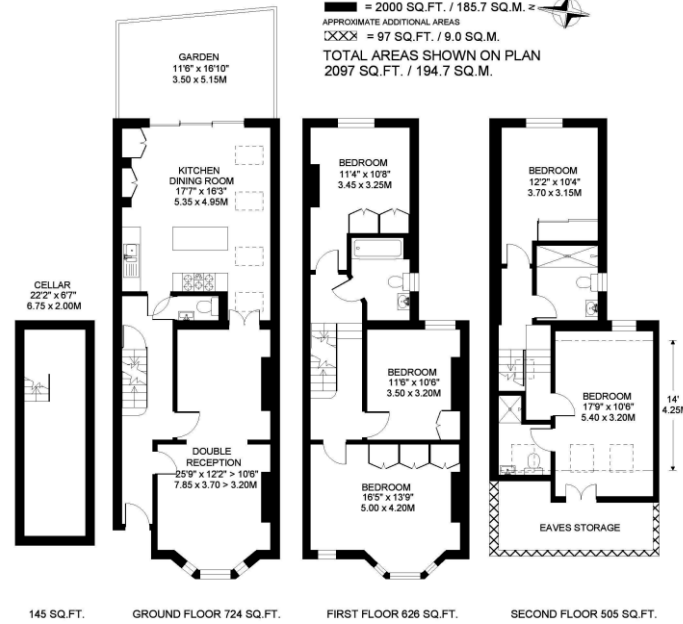
**FIVE DOUBLE BEDROOMS | DOUBLE  
RECEPTION ROOM |  
KITCHEN/BREAKFAST ROOM | EN  
SUITE SHOWER ROOM | FAMILY  
BATHROOM | SHOWER ROOM |  
GARDEN | CELLAR | UNFURNISHED**





STORMONT ROAD  
BATTERSEA  
LONDON SW11

APPROXIMATE INTERNAL FLOOR (LIVING) AREA  
 ■■■■ = 2000 SQ.FT. / 185.7 SQ.M. ±  
 APPROXIMATE ADDITIONAL AREAS  
 XXXX = 97 SQ.FT. / 9.0 SQ.M.  
**TOTAL AREAS SHOWN ON PLAN**  
**2097 SQ.FT. / 194.7 SQ.M.**



COPYRIGHT  
 FLOORPLAN PRODUCED FOR "RAMPTON BASELEY" by www.RamptonBazeley.co.uk  
 This plan is prepared to current best practice and is a general guide only. It is not intended to be relied upon as a statement of fact.  
 All measurements are given in approximate only, and have been prepared in accordance with the current edition of the BS5534 Code of Measuring Practice.  
 Where a measurement is given in both feet and metres, the metric measurement is shown in brackets.

**IMPORTANT:** We would like to inform prospective purchasers that these sales particulars have been prepared as a general guide only. A detailed survey has not been carried out, nor the services, appliances and fittings tested. Room sizes should not be relied upon for furnishing purposes and are approximate. If floor plans are included, they are for guidance purposes only and may not be to scale. If there are any important matters likely to affect your decision to buy, please contact us before viewing the property.



ALL STATEMENTS CONTAINED IN THESE PARTICULARS AS TO THIS PROPERTY ARE MADE WITHOUT RESPONSIBILITY ON THE PART OF RAMPTON BASELEY ESTATE AGENTS

**RAMPTON BASELEY OFFICES**

NORTHCOTE ROAD SW11 | 020 7228 5111  
 BELLEVUE ROAD SW17 | 020 3846 0999  
 HEAVER & TOOTING BEC SW17 | 020 8767 7079

[www.ramptonbaseley.com](http://www.ramptonbaseley.com)

