



 RAMPTON
BASELEY

COURTENAY HOUSE / £380 per week

COURTENAY HOUSE / £380 per week

A LOVELY TWO-BEDROOM APARTMENT SET ON THE FIFTH FLOOR OF COURTENAY HOUSE, FACING NORTH WITH VIEWS ACROSS LONDON. BOTH BEDROOMS ARE A SIMILAR SIZE AND THERE IS A LARGE BATHROOM COMPLETE WITH A BATHTUB. THE PROPERTY BOASTS A FULLY FITTED KITCHEN AND INCLUDES A DISHWASHER.

One of the best views in London. This lovely two-bedroom apartment is set on the fifth floor of Courtenay House and faces North, offering dramatic views across the London Skyline. There is a balcony off the reception room that enjoys sun most of the day with enough room for alfresco dining. Both bedrooms are of a similar, generous size and there is a large bathroom complete with a bathtub. The property boasts a fully fitted, modern, and spacious kitchen that includes a dishwasher.

The property is located a short walk from Streatham Hill station and multiple bus routes linking you to central London. If you're looking for more outside space, Brockwell Park is around a fifteen-minute walk away and there are a number of good schools in the immediate area.

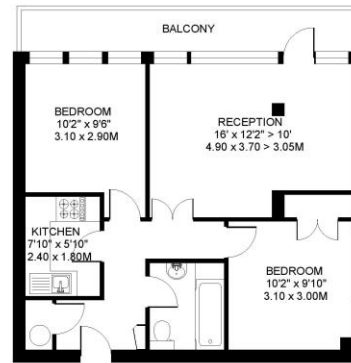


TWO DOUBLE BEDROOMS | OPEN
PLAN DINING/LIVING ROOM |
BATHROOM | BALCONY | FIFTH
FLOOR APARTMENT | FURNISHED



COURTENAY HOUSE
BRIXTON HILL
LONDON SW2

APPROXIMATE INTERNAL FLOOR (LIVING) AREA
587 SQ.FT. / 54.5 SQ.M.



FIFTH FLOOR

COPYRIGHT:
FLOORPLAN PRODUCED FOR "RAMPTON BASELEY" by www.floorplanners.co.uk
This plan is proportionally correct, but not to a given scale, and is for guidance only, and must not be relied upon as a statement of fact.
All measurements and areas are approximate only, and have been prepared in accordance with the current edition of the RICS Code of Measuring Practice.
Where a room has a sloping ceiling, the dotted line marks 1.5m height, and the measurements are shown at floor level.

IMPORTANT: We would like to inform prospective purchasers that these sales particulars have been prepared as a general guide only. A detailed survey has not been carried out, nor the services, appliances and fittings tested. Room sizes should not be relied upon for furnishing purposes and are approximate. If floor plans are included, they are for guidance purposes only and may not be to scale. If there are any important matters likely to affect your decision to buy, please contact us before viewing the property.



ALL STATEMENTS CONTAINED IN THESE PARTICULARS AS TO THIS PROPERTY ARE MADE WITHOUT RESPONSIBILITY ON THE PART OF RAMPTON BASELEY ESTATE AGENTS

RAMPTON BASELEY OFFICES

NORTHCOTE ROAD SW11 | 020 7228 5111
BELLEVUE ROAD SW17 | 020 3846 0999
HEAVER & TOOTING BEC SW17 | 020 8767 7079

www.ramptonbaseley.com

