

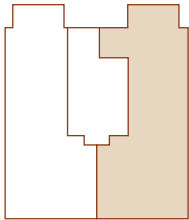
Klay

Wandsworth
London
SW18 1EP

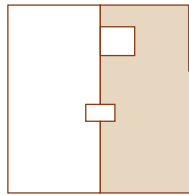
Fourth and Fifth Floor Apartment Nine



Fourth Floor



Fifth Floor



Kitchen
2.9m x 2.8m / 9.5ft x 9.2ft

Upper Front Terrace
2.6m x 1.3m / 8.5ft x 4.3ft

Principal Bedroom
5.4m x 4.5m / 17.7ft x 14.8ft

Third Bedroom
2.8m x 3.2m / 9.2ft x 10.5ft

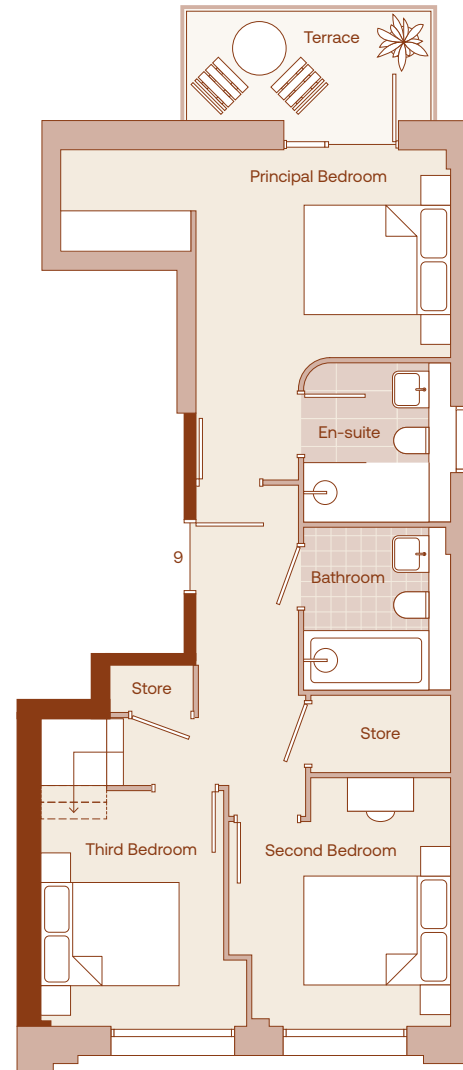
Living / Dining
4.6m x 6.1m / 15.1ft x 20.0ft

Upper Back Terrace
3.8m x 4.4m / 12.5ft x 14.4ft

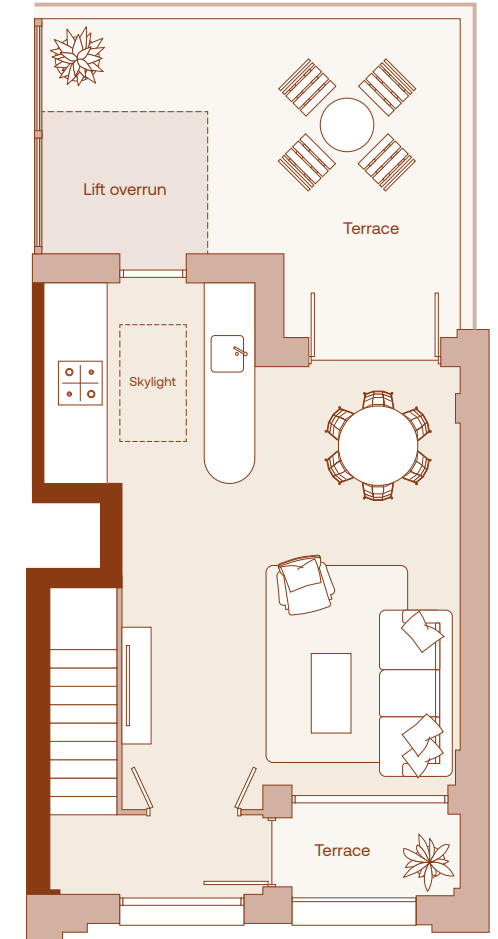
Second Bedroom
3.1m x 3.4m / 10.2ft x 11.2ft

Lower Terrace
3.4m x 1.5m / 11.2ft x 4.9ft

Total
96 sqm / 1,033 sqft



Lower Level



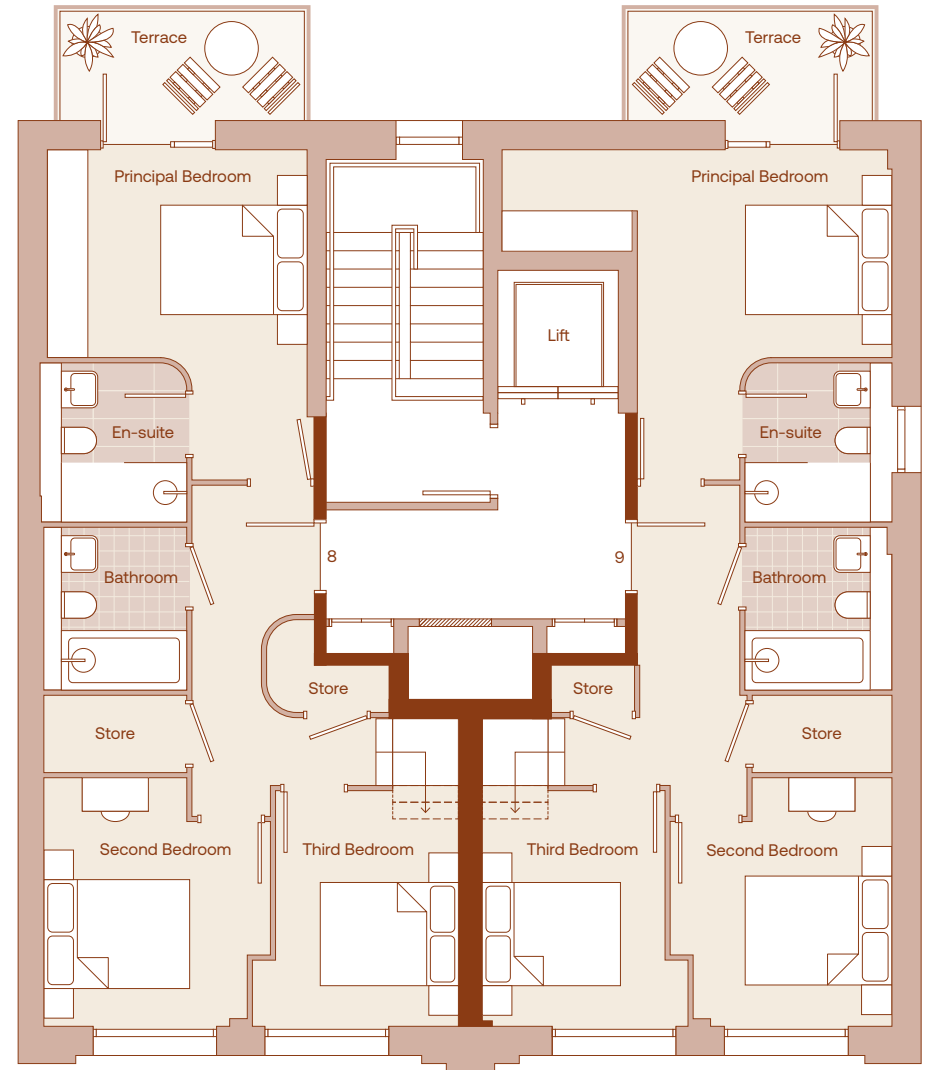
Upper Level



Klay

Wandsworth
London
SW18 1EP

Fourth Floor Overview



Klay

Wandsworth
London
SW18 1EP

Fifth Floor Overview

