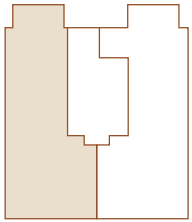


# Klay

Wandsworth  
London  
SW18 1EP

**Third Floor**  
Apartment Seven



**Living**  
3.7m x 3.7m / 12.1ft x 12.1ft

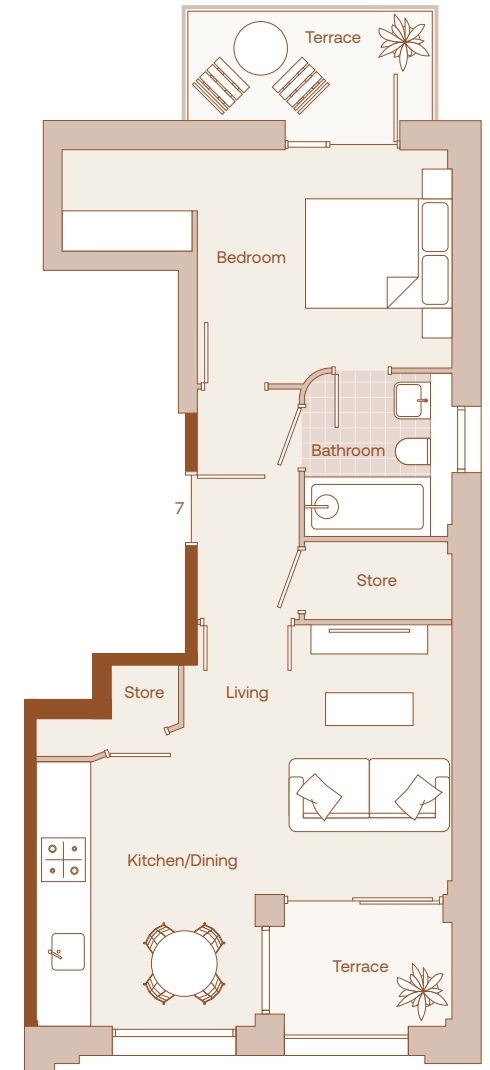
**Front Terrace**  
2.5m x 1.7m / 8.2ft x 5.6ft

**Back Terrace**  
3.4m x 1.5m / 11.2ft x 4.9ft

**Kitchen / Dining**  
3.0m x 3.6m / 9.8ft x 11.8ft

**Bedroom**  
5.4m x 3.2m / 17.7ft x 10.5ft

**Total**  
50 sqm / 538 sqft



# Klay

Wandsworth  
London  
SW18 1EP

## Third Floor Overview

