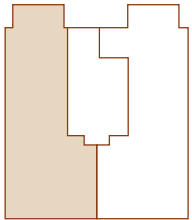


Klay

Wandsworth
London
SW18 1EP

Third Floor
Apartment Six



Living
2.7m x 3.3m / 8.9ft x 10.8ft

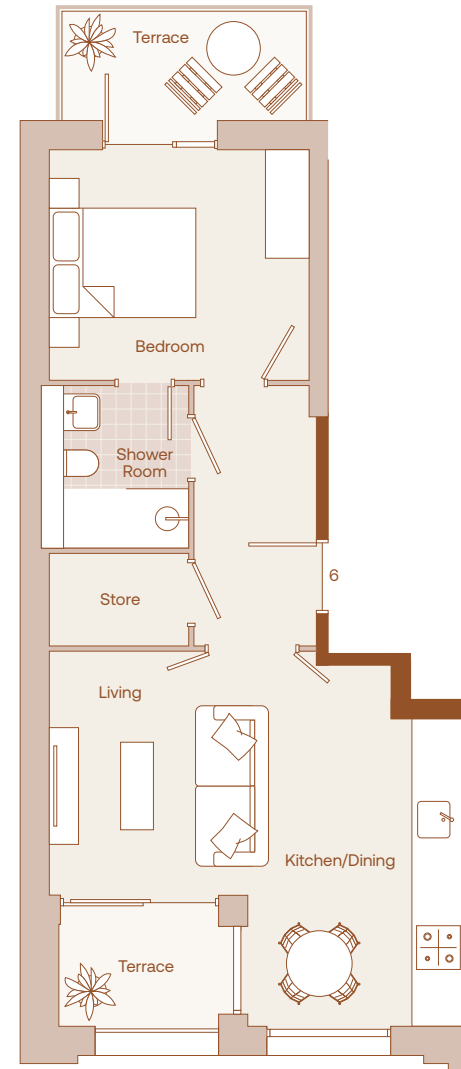
Front Terrace
2.4m x 1.7m / 7.9ft x 5.6ft

Back Terrace
3.4m x 1.5m / 11.2ft x 4.9ft

Kitchen / Dining
3.0m x 4.9m / 9.8ft x 16.1ft

Bedroom
3.6m x 3.2m / 11.8ft x 10.5ft

Total
50 sqm / 538 sqft



Klay

Wandsworth
London
SW18 1EP

Third Floor Overview

