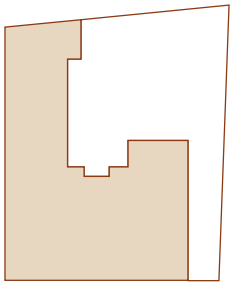


Klay

Wandsworth
London
SW18 1EP

Ground Floor Apartment One



Living / Kitchen
6.7m x 5.0m / 22ft x 16.4ft

Dining / Study
2.2m x 2.6m / 7.2ft x 8.5ft

Principal Bedroom
3.0m x 4.3m / 9.8ft x 14.1ft

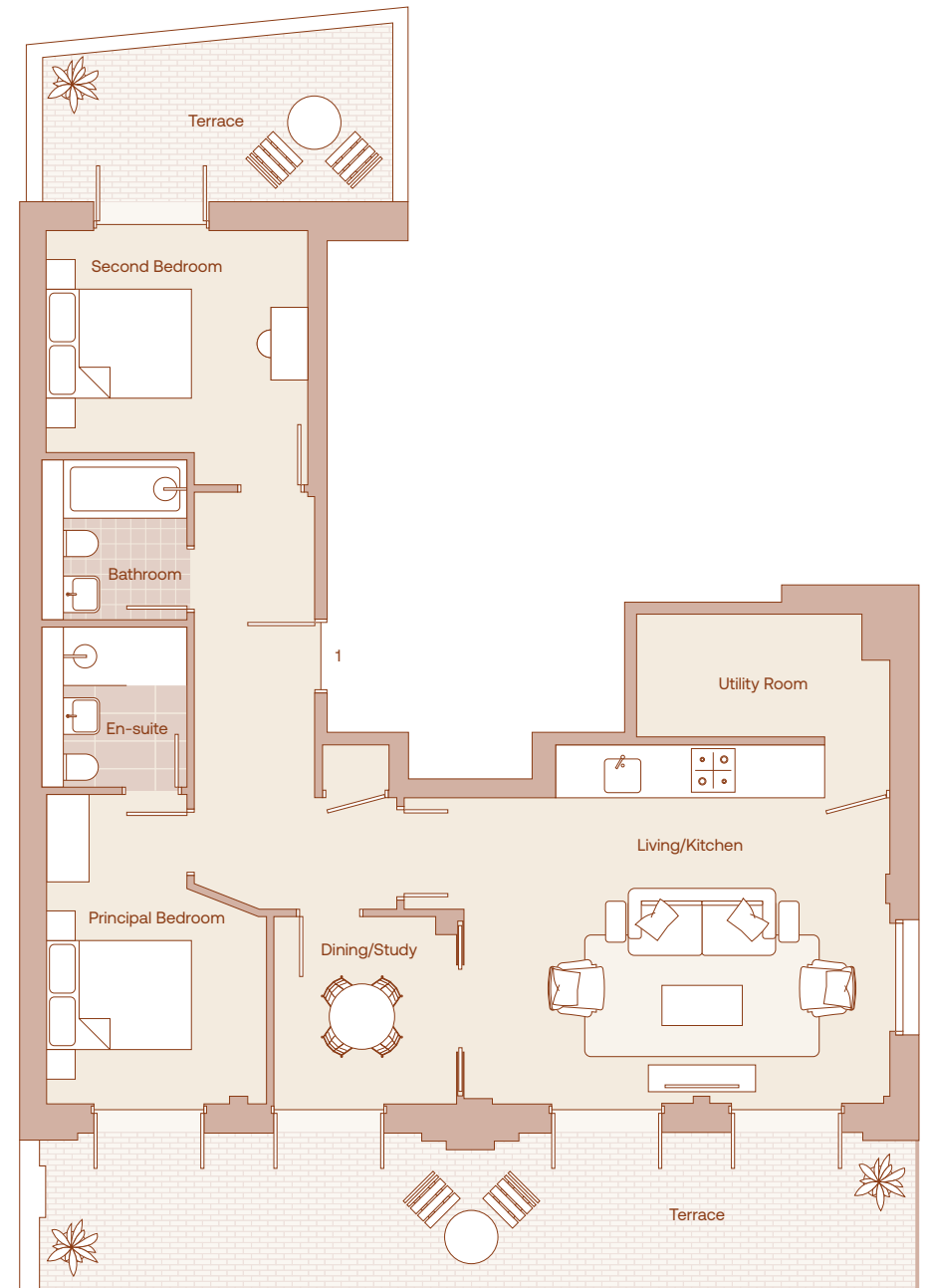
Back Terrace
4.9m x 2.5m / 16.1ft x 8.2ft

Utility Room
3.5m x 1.7m / 11.5ft x 5.6ft

Front Terrace
12.1m x 2.1m / 39.7ft x 6.9ft

Second Bedroom
3.6m x 3.5m / 11.8ft x 11.5ft

Total
77 sqm / 829 sqft



Klay

Wandsworth
London
SW18 1EP

Ground Floor Overview

