



 RAMPTON  
BASELEY

ASPLEY ROAD, SW18 / FREEHOLD

## AN ATTRACTIVE FOUR STOREY VICTORIAN FAMILY HOME ON THIS HIGHLY DESIRABLE ROAD WITHIN EASY REACH OF THE GREEN SPACES OF WANDSWORTH COMMON.

Offering over 2,300 sq ft of accommodation and retaining many original period features, unusually for a property of this type, there are two full floors of reception and entertaining space together with a deep rear garden.

Whilst the property is in need of modernisation, it offers scope for an incoming owner to improve, extend (subject to planning permission) and stamp their own identity on this wonderful house.

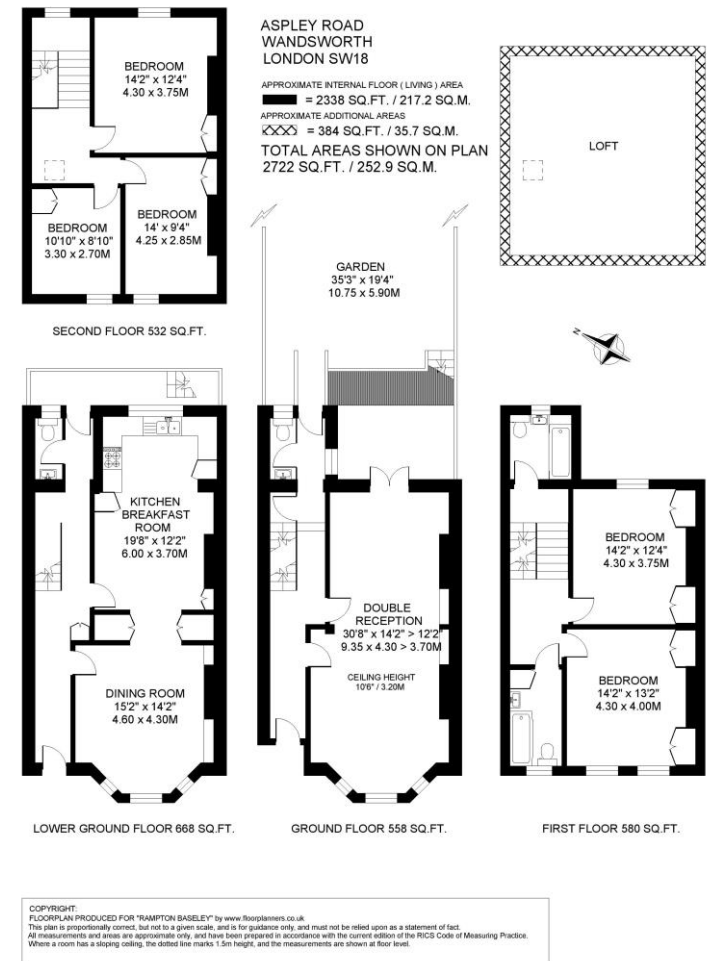
Aspley Road is an attractive residential street just off East Hill. The amenities of Wandsworth Town including the Southside Shopping Centre with a large Waitrose, a variety of high street retailers and a cinema complex are a short walk away, as are the open spaces of Wandsworth Common. Transport can be found at Wandsworth Town station which is approximately a twelve minute walk away, with direct links into Waterloo. Furthermore, there are several excellent state and private primary schools nearby (subject to entry and catchment each year).

Council Tax Band: G | EPC: D | Tenure: Freehold

**IMPORTANT:** We would like to inform prospective purchasers that these sales particulars have been prepared as a general guide only. A detailed survey has not been carried out, nor the services, appliances and fittings tested. Room sizes should not be relied upon for furnishing purposes and are approximate. If floor plans are included, they are for guidance purposes only and may not be to scale. If there are any important matters likely to affect your decision to buy, please contact us before viewing the property.



ALL STATEMENTS CONTAINED IN THESE PARTICULARS AS TO THIS PROPERTY ARE MADE WITHOUT RESPONSIBILITY ON THE PART OF RAMPTON BASELEY ESTATE AGENTS



## RAMPTON BASELEY OFFICES

NORTHCOTE ROAD SW11 | 020 7228 5111  
 BELLEVUE ROAD SW17 | 020 3846 0999  
 BALHAM HIGH ROAD SW17 | 020 8767 7079  
 GARRATT LANE SW18 | 020 8879 6205

[www.ramptonbaseley.com](http://www.ramptonbaseley.com)

