

GILBEY ROAD
LONDON SW17

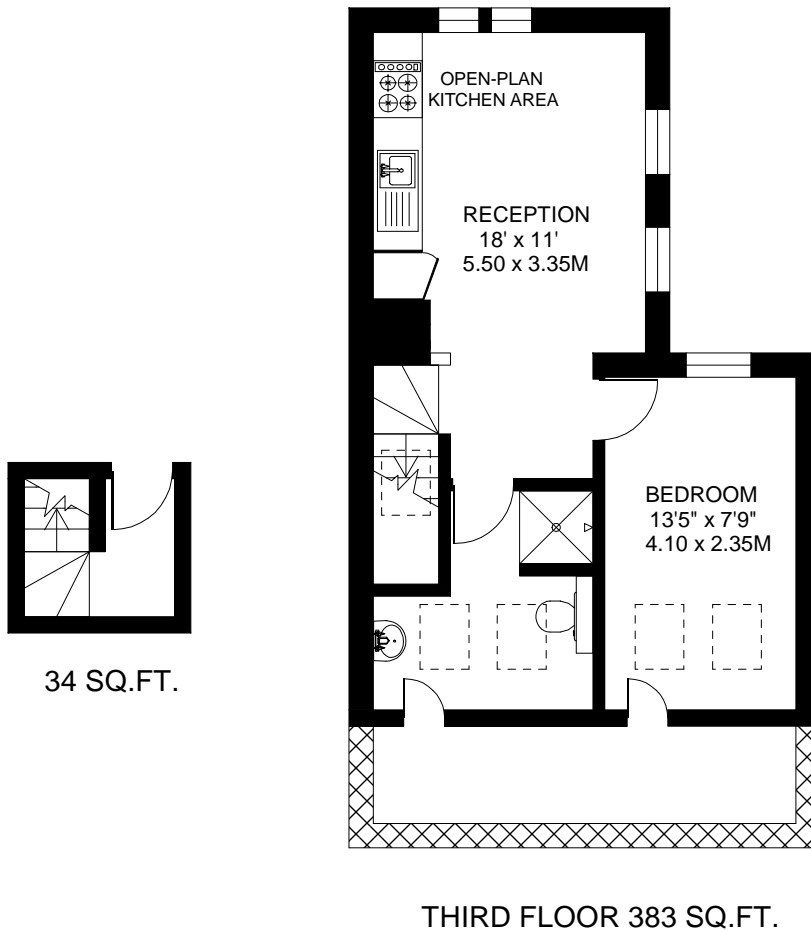
APPROXIMATE INTERNAL FLOOR (LIVING) AREA

■ = 417 SQ.FT. / 38.8 SQ.M.

APPROXIMATE ADDITIONAL AREAS

▨ = 67 SQ.FT. / 6.2 SQ.M.

TOTAL AREAS SHOWN ON PLAN
484 SQ.FT. / 44.9 SQ.M.



COPYRIGHT:

FLOORPLAN PRODUCED FOR "RAMPTON BASELEY" by www.floorplanners.co.uk

This plan is proportionally correct, but not to a given scale, and is for guidance only, and must not be relied upon as a statement of fact.

All measurements and areas are approximate only, and have been prepared in accordance with the current edition of the RICS Code of Measuring Practice.

Where a room has a sloping ceiling, the dotted line marks 1.5m height, and the measurements are shown at floor level.